

Master of Science in Statistics



DURATION

2 year (full-time), 120 ECTS

APPLICATION DEADLINE

1 March (for non-EEA citizens)

1 June (for EEA citizens)

ACADEMIC CALENDAR



1st semester: 3rd week of September → end of January (exams in January)



2nd semester: 2nd week of February → July (exams in June)

www.kuleuven.be/academiccalendar

Interdisciplinary approach

This master's programme is offered by the Leuven Statistics Research Centre (LStat) of KU Leuven. It is accredited by the Royal Statistical Society. You'll be trained intensively in both the theoretical and practical aspects of statistics. The programme will also help you develop a problem-solving attitude and teach you how to apply statistical methodology. To tailor the programme to your needs and interests, you choose one of the following options:

- Biometrics
- Social, Behavioural, and Educational Statistics
- Business Statistics
- Industrial Statistics
- General Statistical Methodology
- Official Statistics
- All-round Statistics

Programme

The 120-ECTS programme consists of a common core curriculum (one semester), option-specific courses (one semester), elective courses (one semester), and a master's thesis.

- **Common core curriculum** (30 ECTS): these courses are compulsory for every student.
- **Option-specific courses** (min. 32 ECTS). Within your selected option, you choose courses worth a total of minimum 32 ECTS.
- **Elective courses** (30 ECTS)

For detailed descriptions of the courses and for the course timetable, please consult www.kuleuven.be/ma/mstatel/programme.

Admission requirements

To be eligible for this master's programme, you must have obtained a bachelor's degree with at least two courses in introductory statistics. You also have to provide evidence of your English proficiency.

Programme admission: www.kuleuven.be/ma/mstatel

General admission: www.kuleuven.be/admissions

Tuition fees

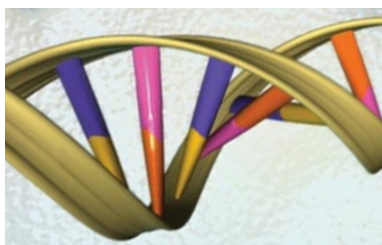
The tuition fee for the 2016-2017 academic year is € 890 for all students. The tuition fee for future academic years may be higher as a result of indexation. Please consult the website for the most recent information: www.kuleuven.be/tuitionfees.

Application procedure

KU Leuven uses an online application system. You can download and submit your application form via www.kuleuven.be/application.

Students with a Flemish degree can consult www.kuleuven.be/studentenadministratie.

Master of Science in Statistics



Discover KU Leuven

Founded in 1425, the University of Leuven (KU Leuven) has been a centre of learning for almost six centuries. Today, it is Belgium's largest and highest-ranked university as well as one of the oldest and most renowned universities in Europe. As a leading European research university and co-founder of the League of European Research Universities (LERU), KU Leuven offers a wide variety of programmes in English supported by high-quality interdisciplinary research.

Within the field of science, engineering, and technology, KU Leuven offers five academic educational profiles organized in five faculties: Science, Engineering Science, Bioscience Engineering, Engineering Technology, and Architecture. Boasting an outstanding central location in the heart of Europe, KU Leuven offers a truly international experience, high-quality education, world-class research and cutting-edge innovation.



KU Leuven is a founding member of
the League of European Research Universities

Career perspectives

As a graduate from the MSc in Statistics, you can go on to pursue a PhD in statistics and related fields or find employment as a statistician in an academic, industrial, or commercial environment.

One-year abridged programme (60 ECTS)

If you have already obtained a quantitative master or PhD degree – including a solid initial training in statistics – you may qualify for exemptions. These, in turn, will enable you to complete the programme in just one year. Abridged programmes are available for all the options in the Master of Science in Statistics. The exact content of an abridged programme will be determined on an individual basis. LStat faculty and staff are available to provide additional information and assistance.

Abridged programme: Quantitative Analysis for the Social Sciences (60 ECTS)

Quantitative Analysis for the Social Sciences is the abridged version of the Social, Behavioural and Educational Statistics option. It consists of compulsory courses (26 ECTS), elective courses (12 ECTS), and a master's thesis (22 ECTS).



Contact:

www.kuleuven.be/ma/mstatel

lstat.kuleuven.be/masterBologna